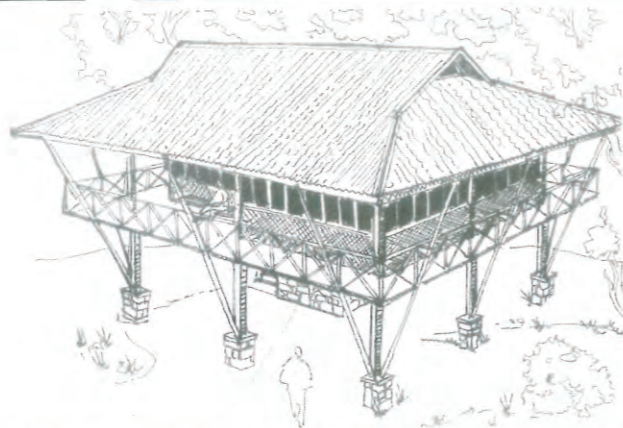




CLIENT DR. ULLAS KARANTH LOCATION HULUVATI VILLAGE, CHICKAMAGALUR YEAR OF COMPLETION 2007 SITE AREA 8094 sq.m BUILT AREA 90 sq.m COST INR 1.5 MILLION ARCHITECT ANAND & ASSOCIATES DESIGN TEAM ANAND V. M., SHUBARANI JORAPURI, P. KRISHNARAJ CONTRACTORS GREEN ELEMENTS PHOTOGRAPHS GOPINATH S.



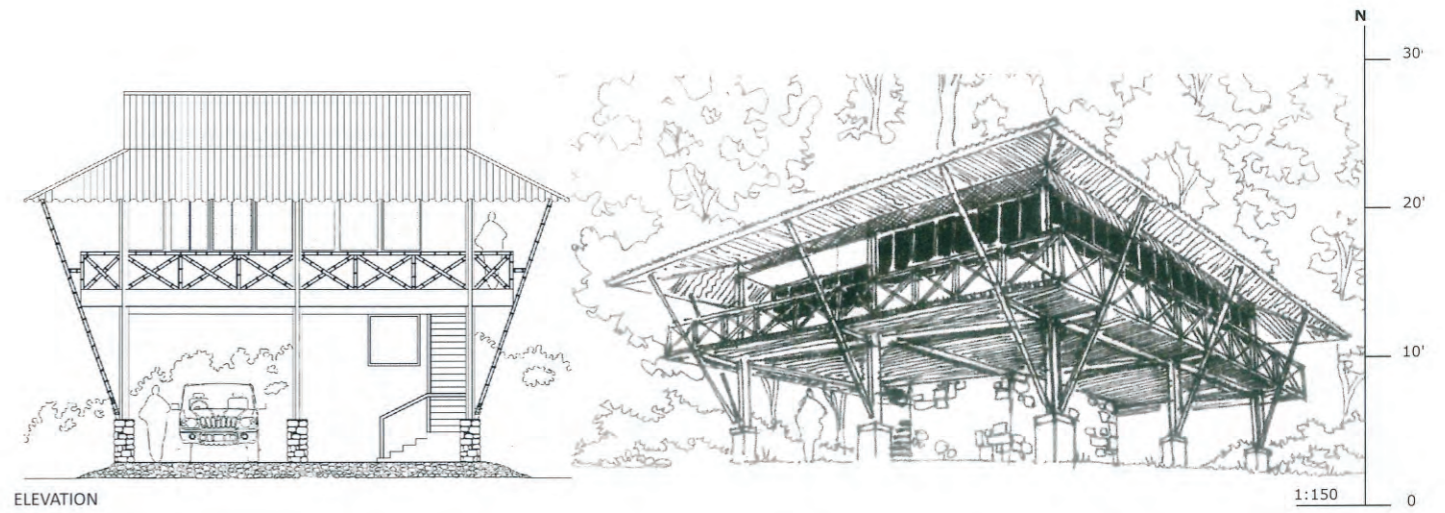
HULIKANU MANE



Hulikanu Mane is a retreat for a wildlife scientist in a thickly wooded site at the edge of the Bhadra Wildlife Sanctuary in Chickamagalur.

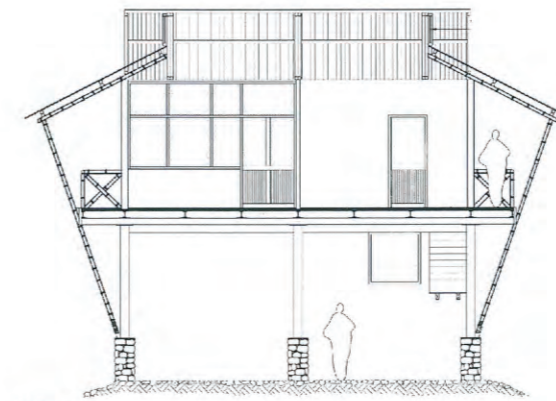
The house measuring 8 m x 10 m is elevated on stilts with a viewing verandah all around akin to a *machan* – a platform in the forest for viewing wildlife. A store room, a toilet and open parking space are located on the ground. The upper level has a large room which accommodates living, dining and kitchen activities in addition to a bedroom and a toilet.

Bamboo is the predominant construction material and forms the framework of the roof and the roofing sheets. The deck is built from interlocking aerated concrete panels supported on prefabricated steel framework. Bamboo railings, bamboo ply furniture, cane chairs and lampshades enhance the rustic aestheticism of the jungle retreat. A solar photovoltaic system for energy and a biomass heater for hot water renders the house completely self-sufficient.

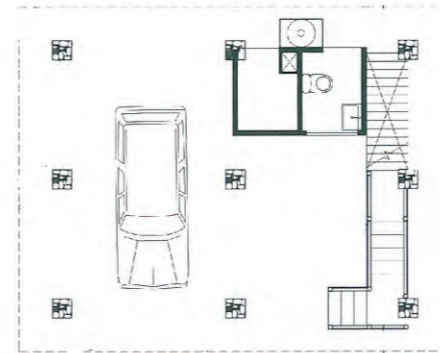


ELEVATION

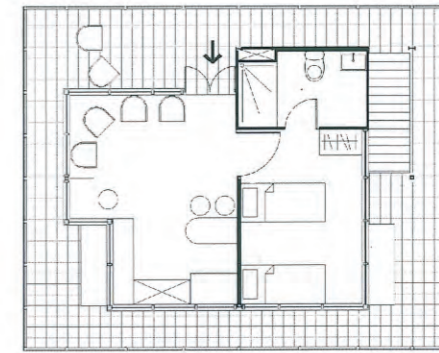
1:150



SECTION



GROUND FLOOR PLAN



FIRST FLOOR PLAN

